



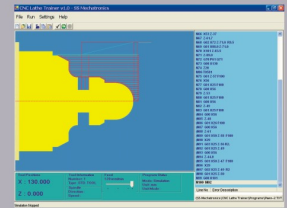
Powering the Educational World

## POWER TURN



### Features

- PC controlled 2 Axis CNC Lathe.
- Slant Bed Design.
- Windows based software with Graphics
- Fanuc compatible programming codes.
- 8 station Programmable Indexable Turret (4 Internal & 4 External Tools).
- Compatible to FMS Technology .
- Fully enclosed Machine with strong Base frame.
- Powerful cutting on Mild Steel as well as on non-ferrous Materials.



### Mechanical Specifications

Swing over Bed	: 200 mm.
Swing over cross slide	: 80 mm.
Distance between centers	: 300 mm.
Spindle Bore, Inside Taper	: 20 mm, MT3.
Spindle Speed	: 200 - 3000 rpm
X axis Travel	: 100 mm.
Z axis Travel	: 250 mm.
Resolution	: 0.005 mm.

### Controller Details

Mains Supply	: 230 V, 1phase, 50Hz, 12 Amp.
Spindle Motor	: 1 HP AC Motor
Axes Motors	: Stepper Motors 400 Steps / Rev.
Emergency stop	: By Software & Hardware.

### Standard Accessories

- Personal Computer.
- Spindle Motor.
- 8 Station programmable Turret.
- Servo Stabilizer.
- Three jaw self-centered chuck - 125 mm
- Tailstock.
- Automatic Lubrication.

### Optional Accessories

- Servo Motors for Axis Movements.
- Hydraulic / Pneumatic chuck & guard.

### Machine Dimensions

Machine L x W x H	: 1350 x 750 x 1450 mm
Machine Weight	: 550 kg.

### Software Features

- Windows based software with Graphics user Interface ( GUI).
- Fanuc compatible programming codes (ISO format).
- On-line 2D graphics Facility with Tool Path Indication.
- MDI facility.
- Metric as well as Inch Programming.
- Absolute & Incremental Programming.
- Program Printout facility with 2D graphics
- Tool Offset Facility
- On-line programming Help.
- Dry -Run facility.
- Powerful on-line Editor.
- Block copy, Delete, Search, Skip facility.
- Software & Manual Stops.
- Subroutine call.
- Simulation & Execution in Single / Auto Block mode.
- Automatic program syntax check.
- Jog mode for initial Tool positioning.
- Over Travel limits & Emergency stops.
- Online information about current tool position, spindle speed, tool no. & feedrate.
- Cycle start, Pause, Resume & stop facility.
- Programmable Dwell.
- Software based automatic lubrication system.
- Various cycles for turning, taper, grooves, parting, drilling, chamfer & threading.

### Other CNC Models

- Micro Turn (Table Top Model SS-MM-200)
- Max Power Turn SS-MPT-300 (With Industrial Siemens controller)



S. No. 13, Plot No. 6A/1, Nanded, off Sinhgad Road, Pune 411 041. Ph: +91-20-65286482  
 Email: squaresys@gmail.com, sssales@squaresystemsindia.com, Website : www.squaresystemsindia.com

